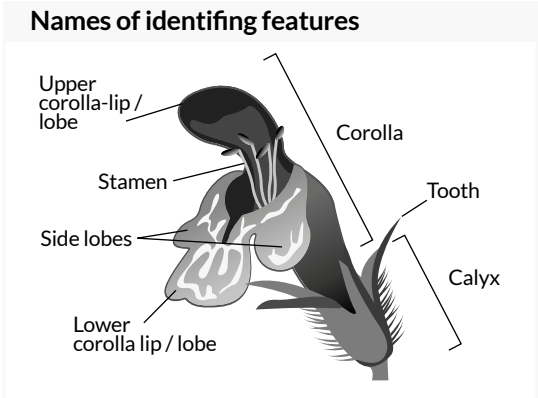
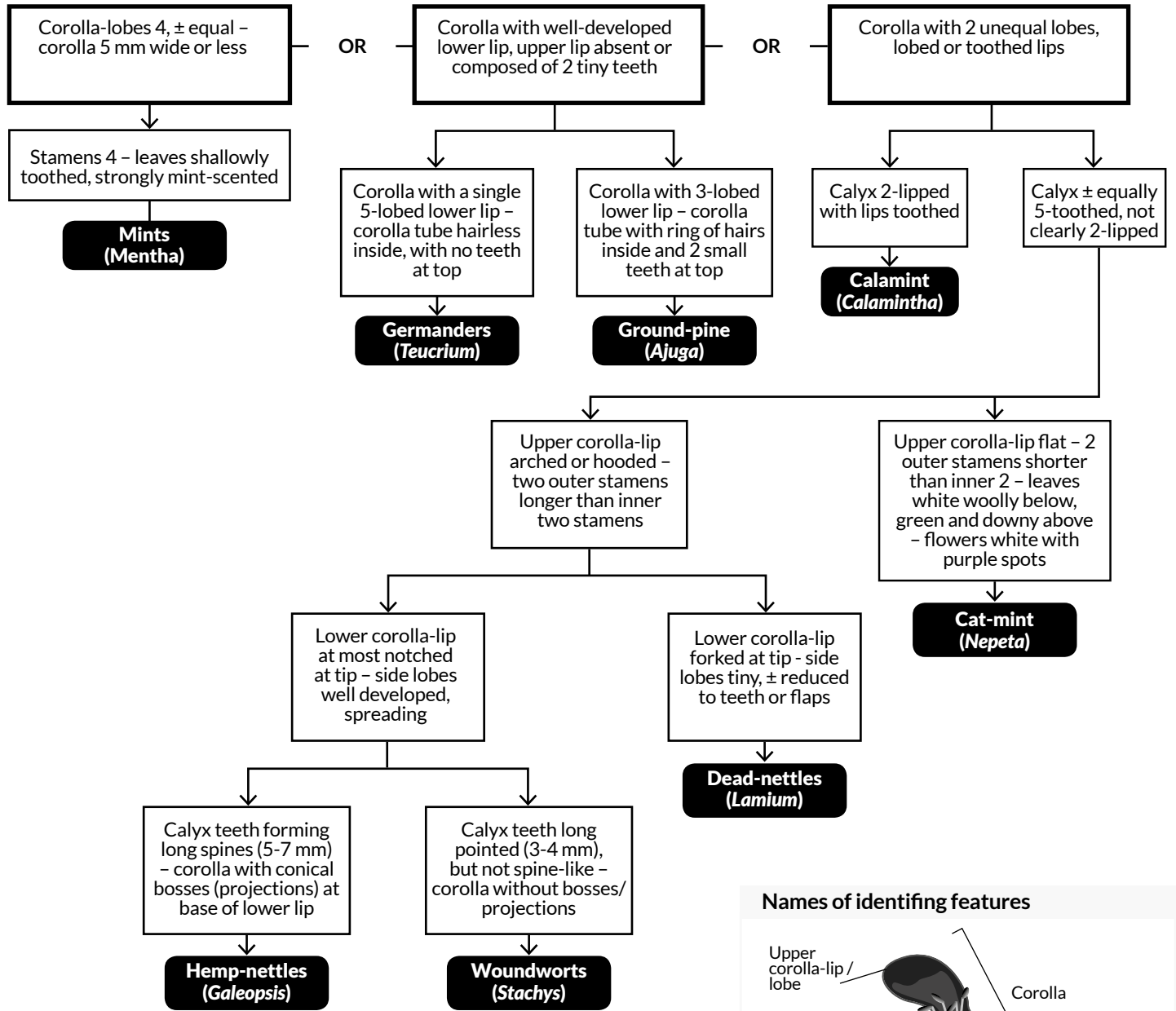


Mints, dead-nettles, hemp-nettles and woundworts

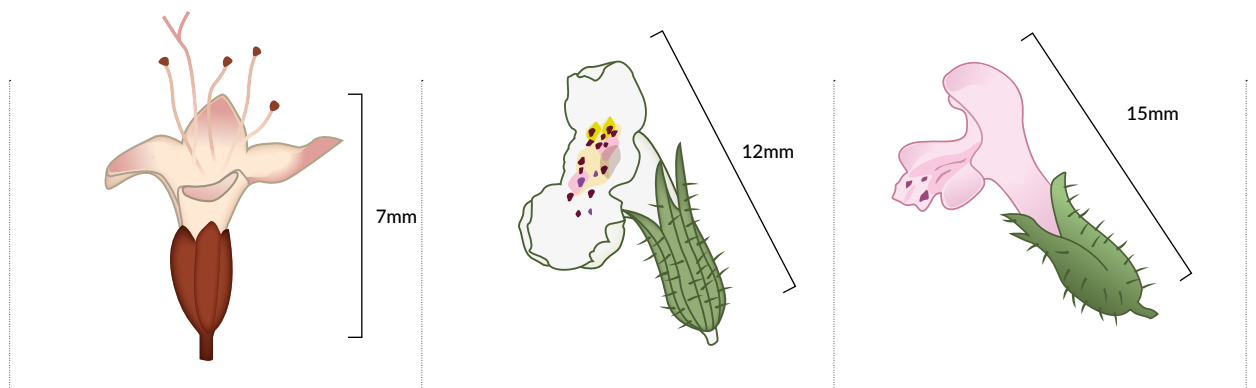
Flow chart to help identify different members of the plant family

(adapted from The Wild Flower Key by F. Rose)



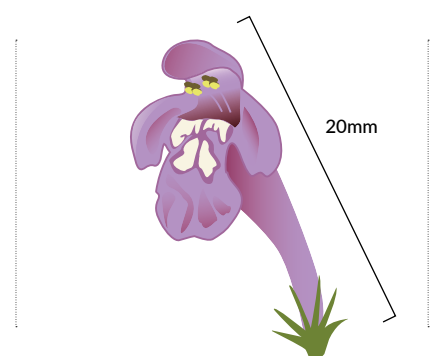
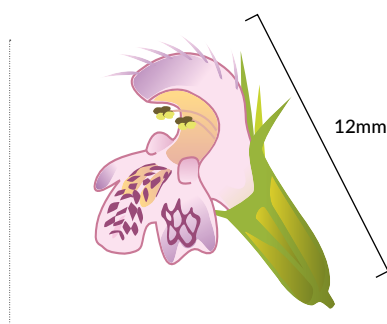
Illustrations by evansgraphic.co.uk ©Plantlife

Plant	Corn mint	Cat-mint	Common calamint
Species	<i>Mentha arvensis</i>	<i>Nepeta cataria</i>	<i>Clinopodium ascendens</i>
Threat Status	Least Concern	Vulnerable	
Distribution	Widespread. Was common but thought to be severely declining at a local scale	Rare. Grows on calcareous soils, particularly derived from chalk and limestone	Widespread, particularly in the south of the UK
Size	10-30 cm	Up to 20 cm	30-60 cm
Stem	Downy	Grey-downy stems	Tufted and hairy
Smell	Peppery-mint	Minty	Mint-scented
Leaves	The leaves have stalks (petioles) and are rounded-elliptical with blunt ends. 2-6 cm long x 1-2 cm wide	Oval-cordate leaves with coarse-teeth. The leaves are stalked and coloured, grey woolly underneath and downy green above. 3-7 cm in length	Leaves are 2-4 cm long with 1 cm stalks. They are oval in outline with a blunt end and truncate bases. There are adpressed hairs. The edge of the leaves have teeth
Flowers	Dense whorls in leaf axils. Small – approx. 7 mm in length	Oblong head of dense whorls Small – approx 12 mm in length	Loose whorls in leaf axils forming a long spike Medium – approx 15 mm in length
Calyx	Bell-shaped, very hairy, short and blunt triangular teeth	Downy, tubular, 5 straight teeth	6-8 mm long, straight, 5-toothed, teeth with long hairs
Petals	Mauve with projecting stamens	Corolla 12 mm, two-lipped, tube curved, white with purple spots	Corolla 10-15 mm long, pinkish white with small purple dots on lower lip
Flowering period	May-Oct	July-Sept	July-Sept



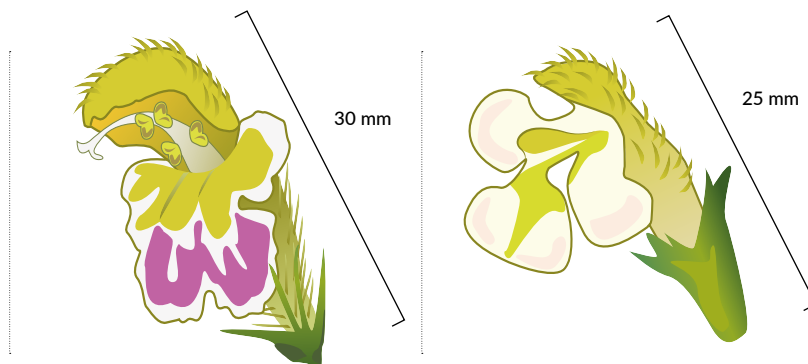
Illustrations by evansgraphic.co.uk ©Plantlife

Plant	Common hemp-nettle	Bifid hemp-nettle	Red hemp-nettle
Species	<i>Galeopsis tetrahit</i>	<i>Galeopsis bifida</i>	<i>Galeopsis angustifolia</i>
Threat Status			Critically Endangered
Distribution	Common and widespread	Common and widespread	Very rare. Mainly grows on calcareous soils, screes or coastal shingle
Size	10-80 cm	10-80 cm	10-60 cm
Stem	Joints swollen, stem branched and bristly with sticky hairs	Joints swollen, stem branched and bristly with sticky hairs	Joints not swollen, stems downy
Leaves	Oval in shape narrowing to the stalk and coarse-toothed. 2.5-10 cm in length	Oval in shape narrowing to the stalk and coarse-toothed. 2.5-10 cm in length	Narrow-lanceolate (spear-shaped) green leaves that are downy with a few small teeth. 1.5-8 cm in length
Flowers	Relatively loose whorls Medium – 10-20 mm in length	Relatively loose whorls Medium – 10-20 mm in length	Relatively loose whorls Large – 8-13 mm in length
Calyx	Bristly with long teeth, sepals 12-14 mm Medium – 13-20 mm in length	Bristly with long teeth, sepals 12-14 mm Relatively loose whorls	Hairy and tubular. Sepals 14-25 mm 6-8 mm long, straight, 5-toothed, teeth with long hairs
Petals	13-20 mm long, pink or white with purple markings on lower lip reaching half way to lip edge. The flower tube is as long as the calyx teeth. The lower petal lobe is not notched	13-16 mm long, pink or white with darker markings on lower lip reaching close to lip edge. The flower tube is as long as the calyx teeth. The lower petal end lobe is curved making it appear to be notched	1.5-2.5 cm long, rosy purple with usually 4 white spots on bottom lip tube on projections (bumps). The flower tube is much longer than the calyx giving the appearance of the flower projecting
Flowering period	July-Sept	July-Aug	June-Oct

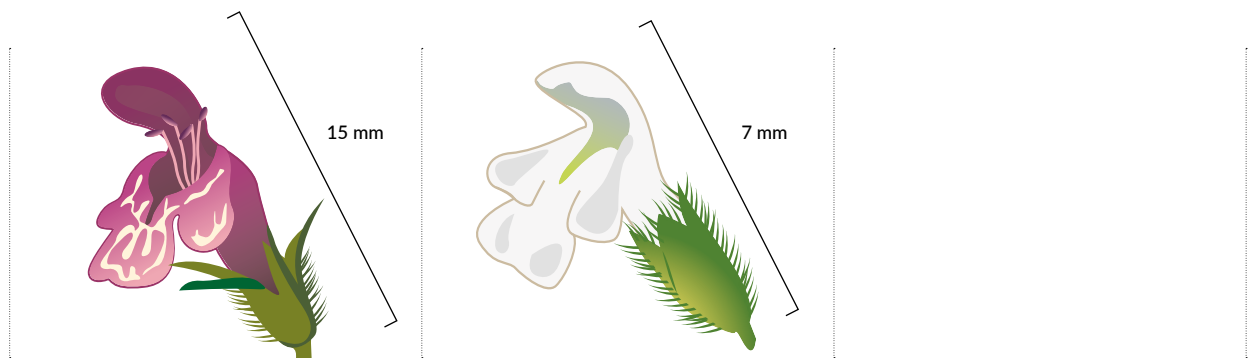


Illustrations by evansgraphic.co.uk ©Plantlife

Plant	Large-flowered hemp-nettle	Downy hemp-nettle
Species	<i>Galeopsis speciosa</i>	<i>Galeopsis segetum</i>
Threat Status	Vulnerable	Extinct / Critically Endangered
Distribution	Sparse. Associated with loam and peaty soils, often inland and to the north of the UK	Thought to be extinct in the UK. Last seen in an arable field in 1975
Size	10-80 cm	10-50 cm
Stem	Stout and bristly	Joints not swollen. The stem is hairy and the hairs point backwards, towards the ground
Leaves	Oval leaves that are pointed. 2.5-10 cm in length	Lanceolate to ovate, hairs adpressed on top surface giving the leaves a velvety texture. 1.5-8 cm in length
Flowers	Relatively loose whorls Very large – approx. 30 mm in length	Relatively loose whorls Large – approx. 25 mm in length
Calyx	Bristly with long teeth. Sepals 12-17 mm	Bristly, sepals 7-10 mm
Petals	Corollas 30 mm long, pale yellow with large violet blotches on lower lip. The flower tube is twice the length of calyx giving the appearance of the flower projecting	Corolla 25-30 mm, sulphur-yellow with a brighter yellow tongue. The flower tube is four times as long as the calyx giving the appearance of the flower projecting
Flowering period	June-Aug	July-Sept

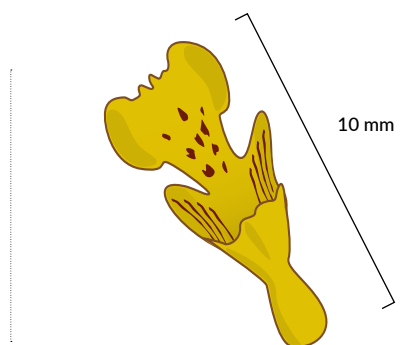
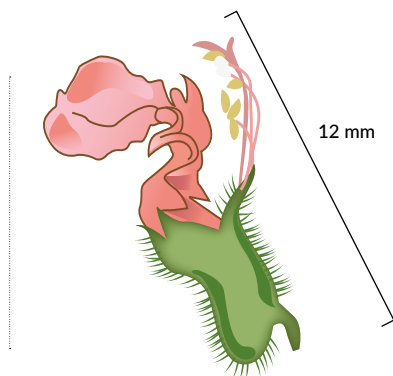


Plant	Hedge woundwort	Field woundwort
Species	<i>Stachys sylvatica</i>	<i>Stachys arvensis</i>
Threat Status		Near Threatened
Distribution	Common and widespread	Uncommon, but widespread. Often associated with loamy soils
Size	30-80 cm	Up to 20 cm
Stem	Patch-forming growth, harshly hairy (pubescent). Glandular hairs present at top of plant	No glandular hairs
Smell	Unpleasantly pungent	Unpleasantly pungent
Leaves	Oval-cordate leaves 4-9 cm in length. The leaf stalks (petioles) are 1.5-7 cm long	Oval and blunt-ended leaves with teeth around the edge. 1.5-3 cm in length
Flowers	Inflorescence is a loose spike at the tip of the plant Medium - 12-15+ mm in length	Few-flowered whorls Small - approx. 7 mm in length
Calyx	Rigid triangular teeth	Sepal teeth long
Petals	Beetroot red with white pattern on lip. Corollas 13-18 mm	6-7 mm long corollas, pale pink
Flowering period	July-Sept	Apr-Nov



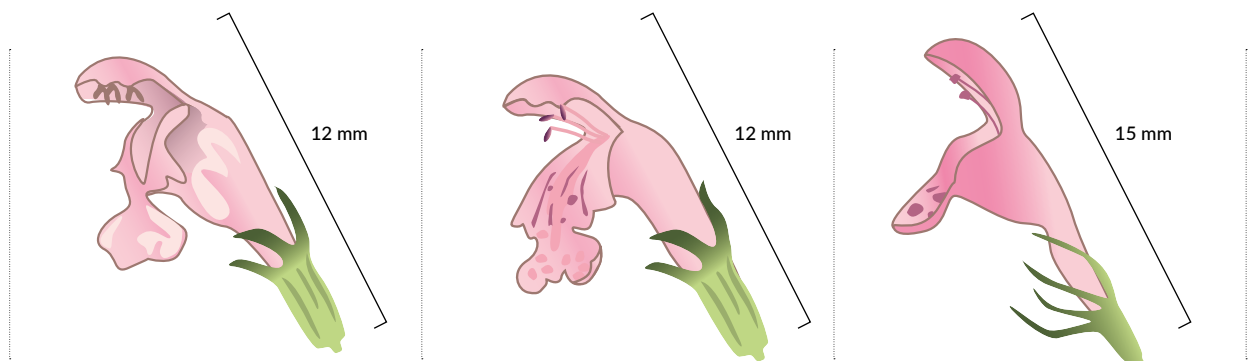
Illustrations by evansgraphic.co.uk ©Plantlife

Plant	Cut-leaved germander	Groundpine
Species	<i>Teucrium botrys</i>	<i>Ajuga chamaepitys</i>
Threat Status	Near Threatened	Endangered
Distribution	Very rare on calcareous soils, particularly chalk	Very rare and restricted almost entirely to the chalk soils of the North Downs. There are a few sites in Hampshire and the Chilterns
Size	10-30 cm	5-20 cm
Stem	Erect, softly hairy	Hairy and branched from base, erect to decumbent
Smell	Pineapple scented	Pine resin
Leaves	Leaves triangular in outline and deeply divided (pinnate) into lobed blunt segments. They are 1-2.5 cm in length	Leaves divided into three narrow, linear blunt lobes
Flowers	2-6 flowered whorls up stem in leaf axils Medium – 15-20 mm	Two per whorl, shorter than leaves Small – up to 10 mm
Calyx	Calyx tubular with 5 equal teeth	Very short calyx with sharp teeth
Petals	Corolla is bright pink with a long lower lip 8+ mm long from the edge of the calyx to the tip of the petal. Very short upper lip	Yellow corollas with a long lower lip 7-15 mm that is red dotted. Very short upper lip
Flowering period	July-Sept	May-Sept



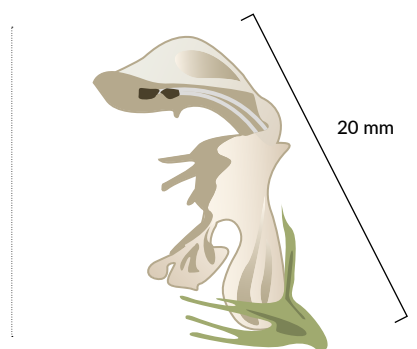
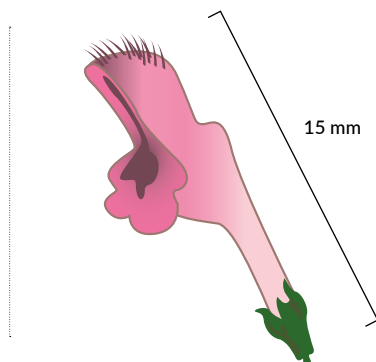
Illustrations by evansgraphic.co.uk ©Plantlife

Plant	Red dead-nettle	Cut-leaved dead-nettle	Northern dead-nettle
Species	<i>Lamium purpureum</i>	<i>Lamium hybridum</i>	<i>Lamium confertum</i>
Threat Status			Least Concern
Distribution	Common and widespread	Widespread. Often associated with loamy soils	Restricted to the north of the UK
Size	10-30 cm	10-30 cm	5-25 cm
Stem	Branched at base	Slender	Downy, branched from base. Stoutier than henbit dead-nettle
Leaves	Leaves and bracts 1-5 cm long. They are cordate-oval in outline with coarse-tooth. The teeth are less than 2 mm long	Bracts triangular-oval with truncate bases. Leaves are deeply toothed with many teeth greater than 2 mm long making the leaf look like it's been cut	Lower leaves are stalked. Bracts are not clasping, Leaves are 1-4 cm in length
Flowers	Dense inflorescence Small - 10-15 mm in length	Dense inflorescent Small - 10-15 mm in length	Relatively loose whorls Medium - approx. 15 mm in length
Calyx	Downy with teeth the same length as the tube spreading in fruit	Downy with teeth the same length as the tube spreading in fruit	Adpressed hairs. Sepals are long and thin tapering to a point, 8-12 mm in length
Petals	Corolla 10-15 mm, pink-purple, tube longer than calyx with ring of hairs inside	Corolla 8-10mm, pink-purple, few or no hairs inside	Corollas mostly 15 mm, pink-purple
Flowering period	Mar-Oct	Mar-Oct	May-Sept



Illustrations by evansgraphic.co.uk ©Plantlife

Plant	Henbit dead-nettle	White dead-nettle
Species	<i>Lamium amplexicaule</i>	<i>Lamium album</i>
Threat Status	Least Concern	
Distribution	Common and widespread. Grows on all types of soils	Common and widespread
Size	5-25 cm	20-60 cm
Stem	Downy, branched from base	Hairy
Leaves	Lower stalked leaves 1-2.5 cm, rounded with blunt tips and truncate bases. Upper bracts beneath the whorls of flowers look like leaves and are paired clasping stem	Stalked, pointed oval leaves with coarse teeth that are nettle-shaped with cordate bases. Leaves and bracts 3-7 cm in length
Flowers	Relatively loose whorls Medium – approx. 15 mm in length	Dense but well-spaced whorls Large – approx. 20 mm in length
Calyx	Calyx with dense spreading white hairs. Sepals 5-7 mm	Calyx 9-15 mm long with long spreading sepals
Petals	Corollas mostly 15 mm, pink-purple, Some corolla tubes are long and others are shorter. Corolla tube is hairless inside	Corolla white with greenish streaks on lower lip, 18-25 mm long. Upper lip long and hairy. Tube curved in an arch and narrows suddenly near base
Flowering period	Apr-Aug	May – Dec



Illustrations by evansgraphic.co.uk ©Plantlife