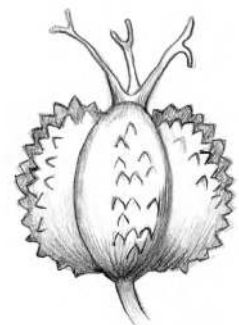
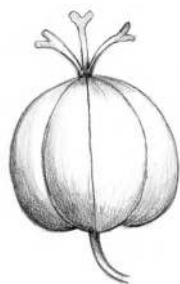


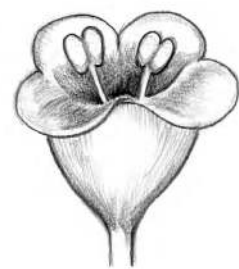
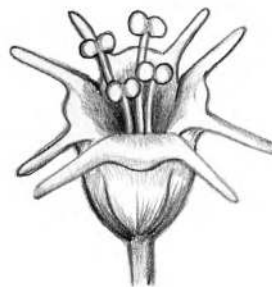
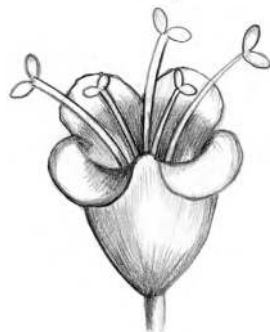
Spurges

Plant	Sun spurge	Petty spurge	Broadleaved spurge
Species	<i>Euphorbia helioscopia</i>	<i>Euphorbia peplus</i>	<i>Euphorbia platyphyllos</i>
Status			Least Concern
Distribution	Common throughout the lowlands of Britain	Common throughout the lowlands of Britain	Largely confined to the south of England on calcareous substrates
Size	20-50 cm	30-40 cm	Up to 80 cm
Stem	Round	Round	Round
Leaves	1.5-3 cm, obovate with blunt ends tapered towards stem. Tiny teeth on margin	0.5-3 cm, stalked, untoothed margin, oval and blunt ended	1-5 cm obovate-lanceolate, unstalked. Tiny teeth on margin
Flowers	Five-rayed umbel with five large ovate toothed yellow-green bracts	Umbel usually three-rayed. Bracts oval, pointed, untoothed	Umbel of elliptical-oblong bracts, but upper bracts all shortly cordate unlike the umbel bracts
Glands	Four oval green flower glands	Four crescent-shaped flower glands	Oval flower glands
Fruit / capsules	Smooth	Smooth	Warted and rounded
Flowering period	May-Oct	Apr-Nov	June-Sept

Fruit capsule



Flower head



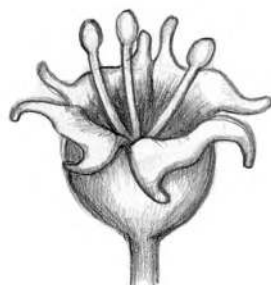
Illustrations by evansgraphic.co.uk ©Plantlife

Plant	Dwarf spurge	Annual mercury
Species	<i>Euphorbia exigua</i>	<i>Mercurialis annua</i>
Status	Near Threatened	Least Concern
Distribution	Mainly found to the south and east of England but also found along the coast of the south-west of England and Wales	Widespread, particularly on calcareous soils but can grow on all types of soil
Size	5-20 cm	Up to 40 cm
Stem	Round	Round, grooved and swollen above nodes
Leaves	0.5-3 cm, narrow, linear, unstalked, usually with a tiny sharp tip, untoothed margin	1.5-5 cm long, elliptical leaves, leaf margin toothed and has hairs
Flowers	Umbel bracts triangular-lanceolate with cordate bases	Dioecious with male catkins and female stalkless fruits
Glands	Crescent-shaped flower glands	
Fruit / capsules	Smooth with ridgeline on each valve	Bristly
Flowering period	June-Oct	July-Oct

Fruit capsule



Flower head



Illustrations by evansgraphic.co.uk ©Plantlife