

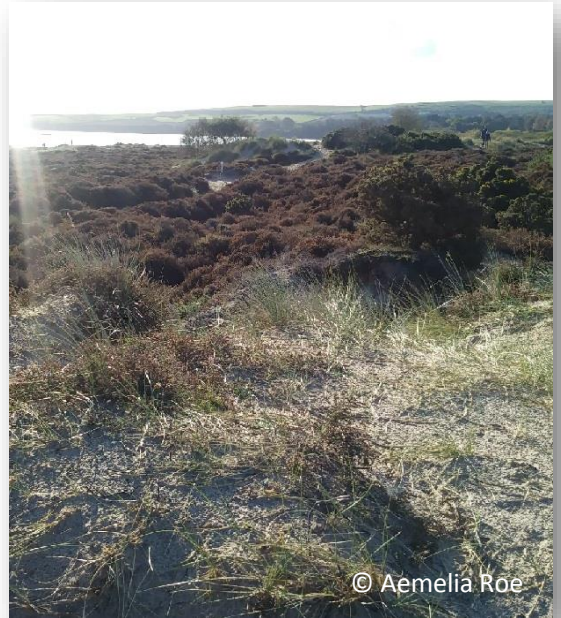
**BACK
FROM THE
BRINK**

Creeks, Clays and Curlew Cottage - Guided Walk

Explore our Heathland landscape through local Cultural Heritage .

Join us for a guided walk at South Haven on Poole Harbour at low tide and discover remnants of an industrial past, World War II, 'Fairy Rings' and a gamekeepers cottage. Find all these clues and more hidden in the landscape.

Meet at the layby top of Greenland's Farm track on the Studland Ferry Road.



DATE Wednesday 29th January **TIME** 10:00am – 12:00pm

LOCATION Studland Heath NNR, start at Greenland's Track

Booking Essential Aemelia.Roe@plantlife.org.uk



Plantlife

