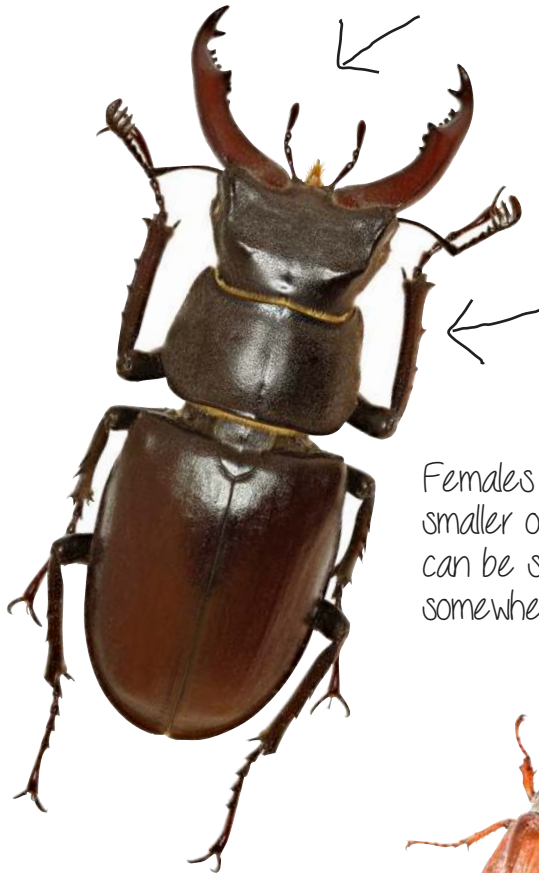


# Stag beetles (*Lucanus cervus*) and their look-a-likes



people's  
trust for  
endangered  
species

A stag beetle's head and pronotum (the top part of the thorax) are shiny black and its wing cases are chestnut brown.



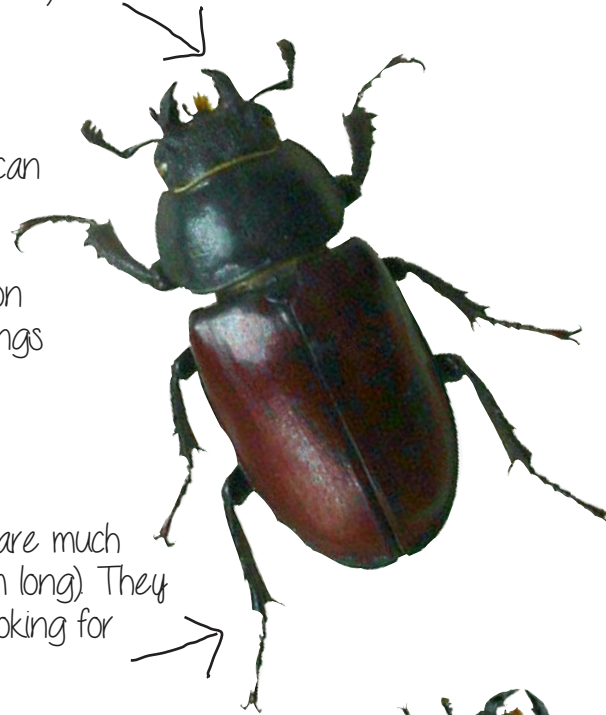
Males have large antler-like jaws and can vary from 3.5 to 8cm in length. They can be seen flying on warm summer evenings looking for a mate.

Females have small jaws and are much smaller overall (about 3 to 5cm long). They can be seen on the ground looking for somewhere to lay their eggs.

Cockchafers or may bugs are brown and furry and have leafy antennae. They are about 2.5 to 3cm long



Lesser stag beetles are much smaller (up to 3cm) and are matt black all over. The males and females are much more similar but they can still be told apart if you have a keen eye. A large lesser stag beetle can be confused with a small female stag beetle.



Other beetles that may be mistaken for stag beetles:



Devil's coach horse beetle

Dor beetle



Violet ground beetle



Minotaur beetle

