

Cudweeds

Cudweeds have characteristically minute florets grouped into flower heads, which are in turn grouped in clusters of heads.

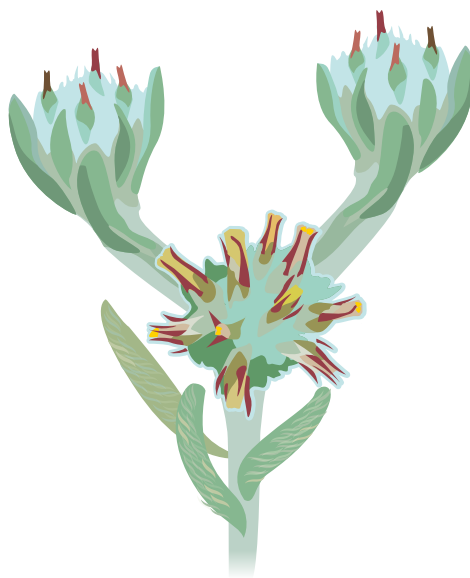
Plant	Common cudweed	Broad-leaved cudweed
Species	<i>Filago germanica</i>	<i>Filago pyramidata</i>
Threat status	Near Threatened	Endangered
Distribution	Widely distributed in England, mainly coastal in Wales and Scotland and rare in Northern Ireland	Restricted to south-east England, Salisbury Plain and East Anglia. Usually found on chalky soils
Life cycle	Annual	Annual
Habit	White-woolly stems with 2-3 branches below the flower heads	Many branches spreading from the base and branches below flower heads. Can be a small compact plant less than 3 cm on poor soils
Leaves	Wavy-edged leaves without a bristle point at the tip. The top leaves are shorter than flower head clusters	Flat-edged leaves with a bristle point at the tip. The top leaves overtop flower head clusters
Sepal-like bracts	Woolly for over half their length, bristle-pointed, erect in fruit with yellow tips	Woolly for over half their length, bristle-pointed, erect in fruit with yellow tips
Flower-head clusters	Spherical with 20-40 heads	Spherical with 8-15 heads
Flower heads	Scales present in outer part of flower heads	Scales present in outer part of flower heads



Illustrations by evansgraphic.co.uk ©Plantlife

Cudweeds

Plant	Red-tipped cudweed	Small cudweed
Species	<i>Filago lutescens</i>	<i>Logfia minima</i>
Threat status	Endangered	
Distribution	Very scarce and found in south-east England, East Anglia and Gloucestershire. Usually found on more acidic sandy loams	Widely distributed throughout the UK. Locally common in Surrey, Lincolnshire, south Wales and northern Scotland
Life cycle	Annual	Annual
Habit	Yellow-woolly erect stems	Upper half of plant has erect branches
Leaves	Flat-edged leaf with a bristle point at the tip. The top leaves overtop flower head clusters	Very narrow leaves with the top leaves easily overtopping flower head clusters
Sepal-like bracts	Woolly for over half their length, erect in fruit; bright red bristle-pointed tips	Woolly for over half their length, not bristle-pointed, spreading star-shaped in fruit with yellow-cream tips
Flower-head clusters	Spherical with 10-20 heads	Narrow, oval with 3-6 heads
Flower heads	Scales present in outer part of flower heads	Scales present in outer part of flower heads



Illustrations by evansgraphic.co.uk ©Plantlife

Cudweeds

Plant	Narrow-leaved cudweed	Marsh cudweed
Species	<i>Logfia gallica</i>	<i>Gnaphalium uliginosum</i>
Threat status	Extinct / Critically Endangered	
Distribution	East Anglia and probably extinct	Common on damper soils throughout the UK
Life cycle	Annual	Annual or perennial
Habit	Many branches spreading from the base	
Leaves	Narrow leaves. Top leaves of variable size, some longer and others shorter than flower head clusters	Top leaves are like petals and easily overtop flower head clusters
Sepal-like bracts	Woolly for over half their length, not bristle-pointed, spreading star-shaped in fruit with yellow-cream tips	Papery or translucent with yellowy tips. If woolly, then for less than half their length
Flower-head clusters	Narrow, oval with 2-6 heads	Pointed with 3-10 heads
Flower heads	Scales present in outer part of flower heads	No scales in flower heads



Illustrations by evansgraphic.co.uk ©Plantlife